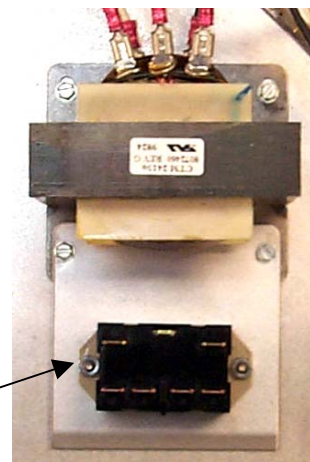


# UHC Power Relay Installation, Kit 826-1718

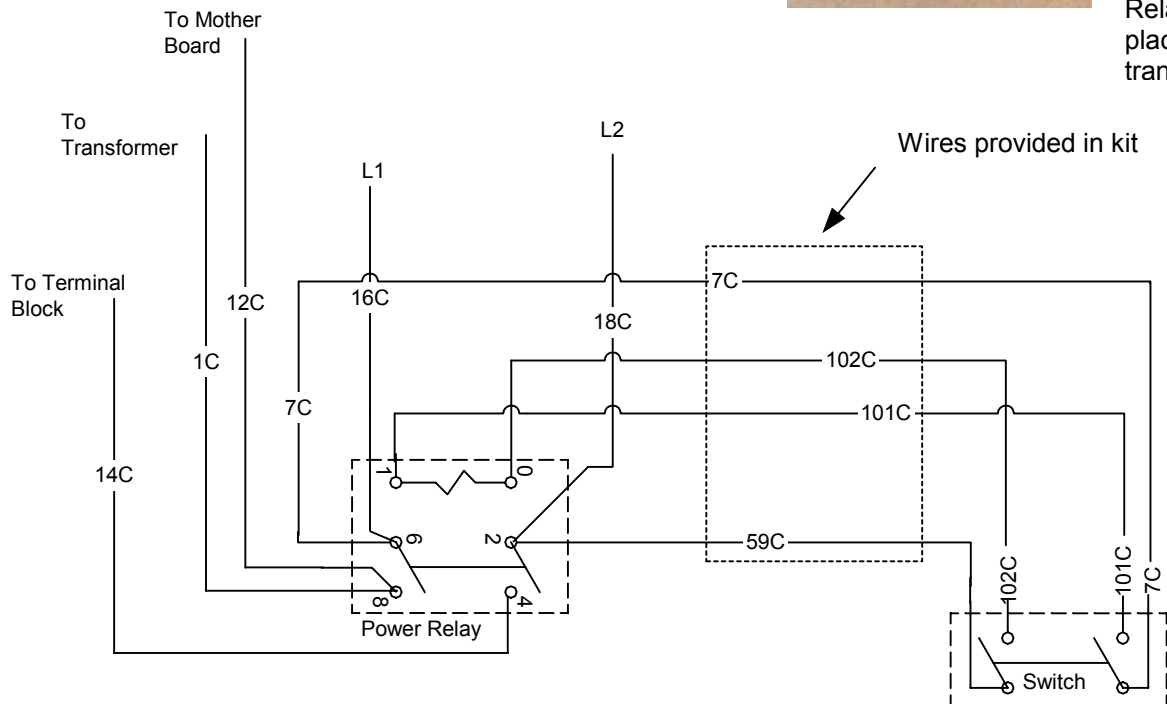
Follow these steps to install power relay and switch in a McDonald's UHC.

- Remove power from unit.
- Remove sides and top.
- Fasten new relay to provided bracket.
- Locate UHC transformer and remove screws on leading edge of mounting plate.
- Position relay in front of transformer and fasten into place with existing screws. **See Fig. 1.**
- Wire relay as shown in **Fig. 2** in post '98 units. Wire as shown in **Fig. 3** in pre '98 units.
- Replace switch with switch provided.
- Wire switch as shown in **Fig. 2** in post '98 units. Wire as shown in Fig 3. for pre '98 units.
- Return power to unit and test operation.
- Fasten new wiring diagram to interior of left side cabinet wall.
- Return sides and top and return to service.

| In Kit 826-1718 |          |          |
|-----------------|----------|----------|
| Description     | Quantity | Part No. |
| Instructions    | 1        | 819-5831 |
| Relay           | 1        | 807-3490 |
| Wiring          | 4        | N/A      |
| Bracket         | 1        | 106-0650 |
| Diagram         | 1        | 805-1342 |
| Nut 6-32        | 2        | 809-0250 |
| Switch          | 1        | 807-3308 |



**Figure 1:** Relay is held in place with transformer



**Figure 2:** Wire new power relay and switch as shown for post '98 units.

# UHC Power Relay Installation, Kit 826-1718

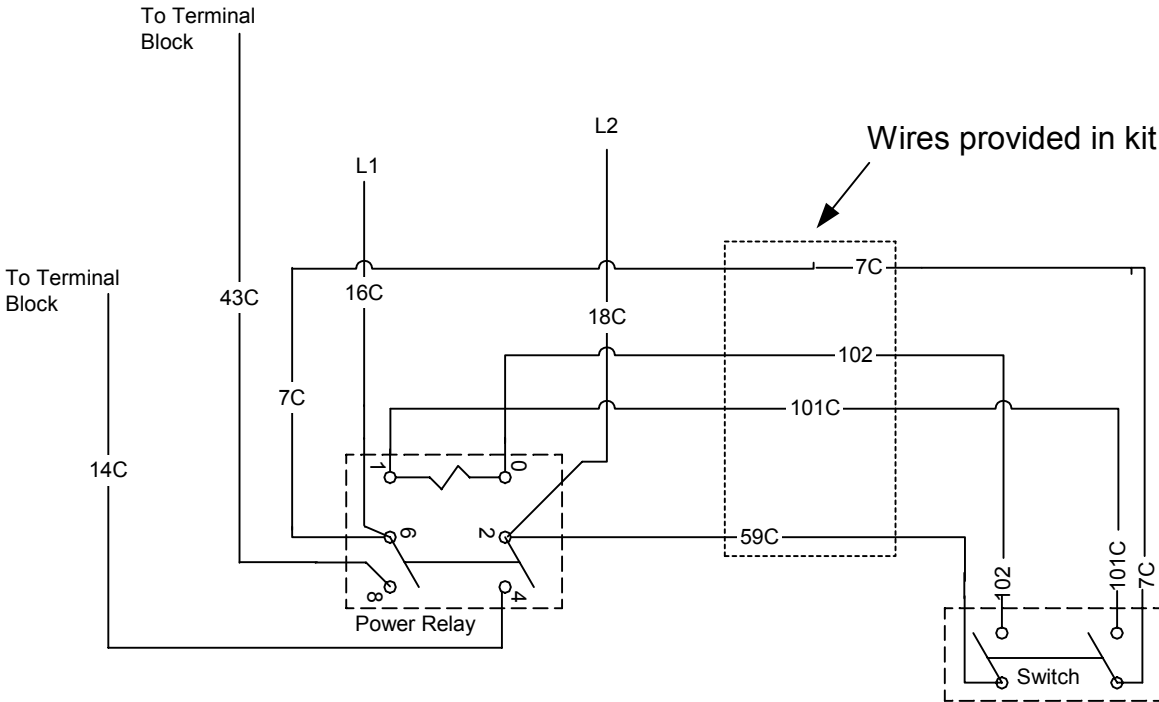


Figure 3: Wire relay as shown for pre '98 units.